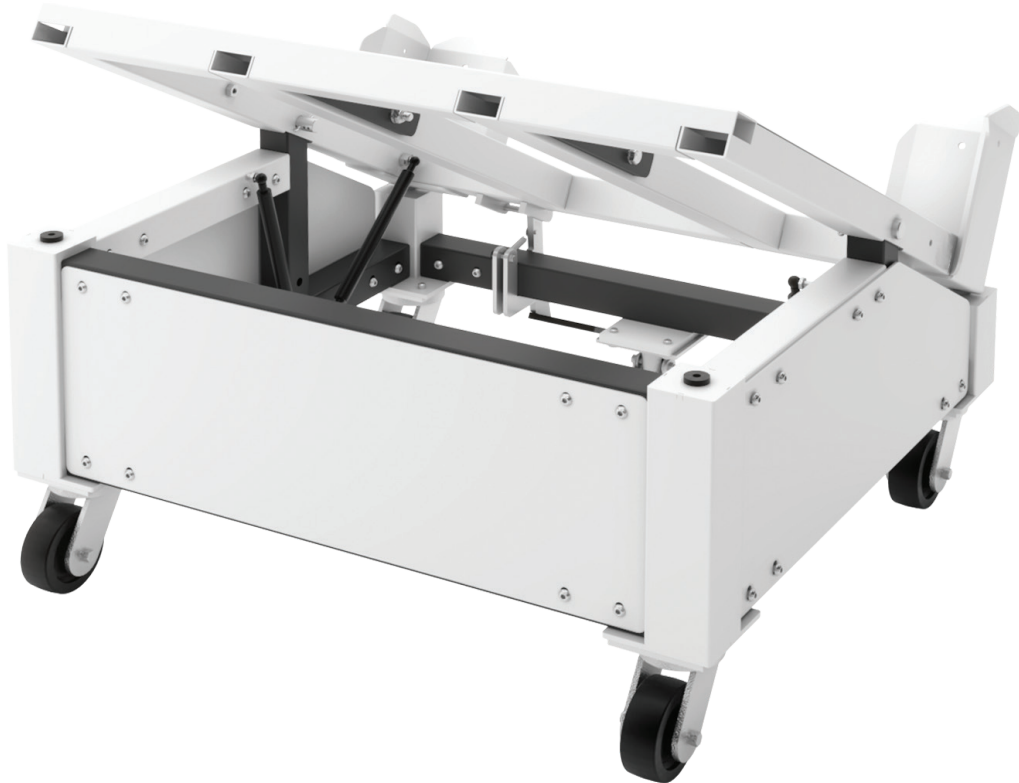


**BUILT**  
SYSTEMS

**PRODUCT  
SPECS**

# TILT CART

GAS-ASSIST ADJUSTMENT



## LOAD CAPACITY

500 lbs

## STANDARD SIZES

34" width x 33" length  
48" width x 48" length

## STABILITY

Rigid cold-rolled steel construction

4" swivel casters

Foot pedal-activated floor lock brake

## STANDARD COLORS



**RAL 9003** - Signal White



**RAL 7037** - Dusty Grey



**OB07** - Matte Black

## CUSTOMIZATION

Custom Sizes, Color  
and Branding available

## TECHNICAL

# GAS-ASSIST TILT CART



### CASTERS

4 in Swivel

Phenolic Tread

800 lbs Capacity Each

### FLOOR LOCK BRAKE

Foot pedal activated

Non-slip rubber pad for uneven floors

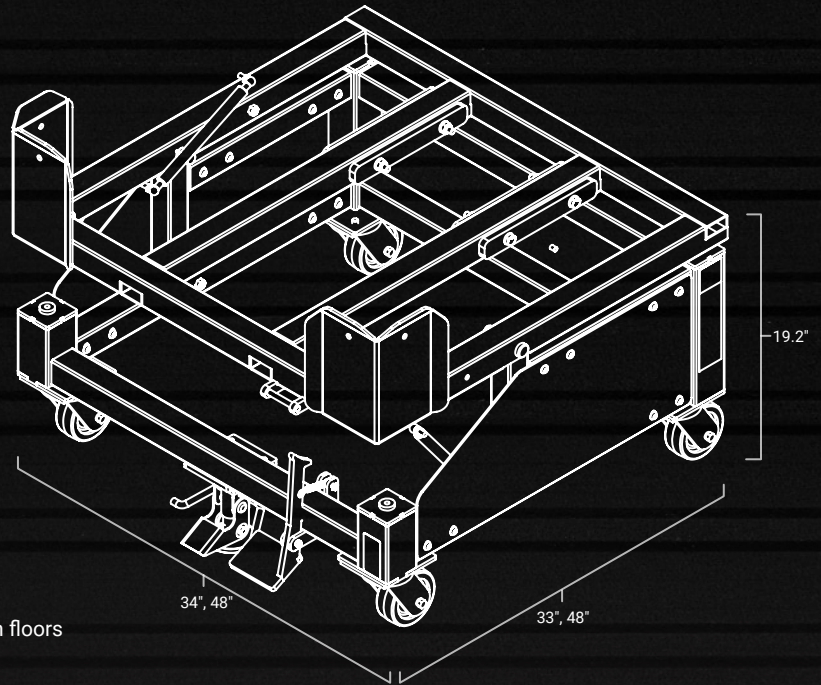
Zinc-plated finish

High-compression spring for heavy loads

### GAS SPRING

Steel Body with Black Nitride Steel Rod

Stroke - 5.47 in



## MECHANICAL SPECS

Carbon Steel ASTM-A513 Construction Including:

2 in x 2 in x 12 ga Tilt Frame

2 in x 2 in x 12 ga Lower Frame

1.75 in x 1.75 in x 14 ga Vertical Tubes

12 ga Side Plates

8 ga Corner Brackets

*Specifications may vary based on system configuration and workload.*