

# Flat Material Handling Cart

## Specs

- Rigid cold-rolled steel construction
- Tube-in-tube design provides extra rigidity
- 500 lbs. of load capacity
- Heavy-duty 6" locking swivel casters
- VOC-free powder coating (standard and custom colors)
- Colorful custom nameplates enhance communication

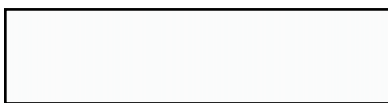
## Sizes

- Standard dimensions:  
32"W x 48"L  
40"W x 76"L

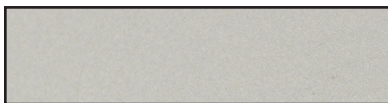


Custom Sizes, Color And Branding Available

## Standard Colors



DESIGNER WHITE



METALLIC SILVER

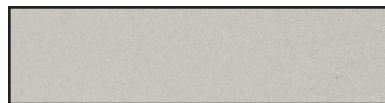


BLACK WRINKLE

## Standard Work Surfaces



BUTCHER BLOCK



HPL



ESD



# Material Handling Series

---

Our FHC offers highly versatile, rugged carts for industrial applications. Available in two standard sizes, these modular flat-top carts carry flat materials at a level that's easy to maneuver.

Each cart accommodates up to two shelves and transports loads of up to 500 pounds. Custom nameplates improve visual communication on the plant floor.

## Custom

---

Because your products and processes are unique, your production challenges are too.

Our in-house design team can create custom solutions on any BUILT product, ensuring that your order meets your goals and precise specifications.

Options are endless,  
So are colors.

Customize these carts  
for your workspace:  
Logos, artwork, text.



11511 James Street  
Holland, MI 49424  
616.795.4569  
builtsystems.net

**BUILT**<sup>®</sup>  
Systems